

# Grafana + Prometheus + Loki

## docker-compose.yml

```
services:
  grafana:
    image: grafana/grafana-oss:11.5.1-ubuntu
    container_name: grafana
    hostname: grafana
    restart: unless-stopped
    environment:
      - GF_SERVER_ROOT_URL=https://grafana.MEINEDOMAIN.de
      - GF_PLUGINS_PREINSTALL=grafana-clock-panel
      - GF_SECURITY_ADMIN_USER=admin
      #- GF_SECURITY_ADMIN_PASSWORD=admin
      - GF_SMTP_ENABLED=true
      - GF_SMTP_HOST=smtp.strato.de:587
      - GF_SMTP_USER=it@MEINEDOMAIN.de
      - GF_SMTP_PASSWORD=MEIN-MAIL-PW
      - GF_SMTP_FROM_ADDRESS=grafana@MEINEDOMAIN.de
      - GF_SMTP_FROM_NAME=Grafana Alerts
    ports:
      - 3030:3000
    volumes:
      - grafana:/var/lib/grafana
    networks:
      grafana-monitoring:

  prometheus:
    image: prom/prometheus:v3.1.0
    container_name: prometheus
    hostname: prometheus
    restart: unless-stopped
```

```
ports:
  - 9090:9090
volumes:
  - prometheus:/etc/prometheus
networks:
  grafana-monitoring:

cadvisor:
  image: gcr.io/cadvisor/cadvisor:v0.47.2
  devices:
    - /dev/kmsg
  privileged: true
  container_name: cadvisor
  hostname: cadvisor
  restart: unless-stopped
  ports:
    - 8088:8080
  volumes:
    - /dev/disk/:/dev/disk:ro
    - /mnt/praxis-volume-01/docker-data:/var/lib/docker:ro
    - /sys:/sys:ro
    - /var/run:/var/run:ro
    - /:/rootfs:ro
  networks:
    grafana-monitoring:

volumes:
  grafana:
  prometheus:

networks:
  grafana-monitoring:
  driver: bridge
```

# Prometheus Node Exporter

Für alle Hardware-Infos des Nodes (CPU, RAM, Netzwerk etc...)

[https://github.com/prometheus/node\\_exporter](https://github.com/prometheus/node_exporter)

<https://prometheus.io/docs/guides/node-exporter/>

docker-compose.yml

```
services:
  node_exporter:
    image: quay.io/prometheus/node-exporter:v1.9.0
    container_name: node_exporter
    command:
      - '--path.rootfs=/host'
    network_mode: host
    pid: host
    restart: unless-stopped
    volumes:
      - '/:/host:ro,rslave'
```

## Prometheus.yml (Prometheus Container)

Danach in das Prometheus Volume gehen und die Prometheus.yml bearbeiten:

```
# my global config
global:
  scrape_interval: 5s # Set the scrape interval to every 15 seconds. Default is every 1
minute.
  evaluation_interval: 5s # Evaluate rules every 15 seconds. The default is every 1 minute.
  # scrape_timeout is set to the global default (10s).

# Alertmanager configuration
alerting:
  alertmanagers:
    - static_configs:
      - targets:
          # - alertmanager:9093

# Load rules once and periodically evaluate them according to the global
'evaluation_interval'.
rule_files:
  # - "first_rules.yml"
  # - "second_rules.yml"
```

```

# A scrape configuration containing exactly one endpoint to scrape:
# Here it's Prometheus itself.
scrape_configs:
  # The job name is added as a label `job=<job_name>` to any timeseries scraped from this
  config.
  - job_name: "prometheus"

    # metrics_path defaults to '/metrics'
    # scheme defaults to 'http'.

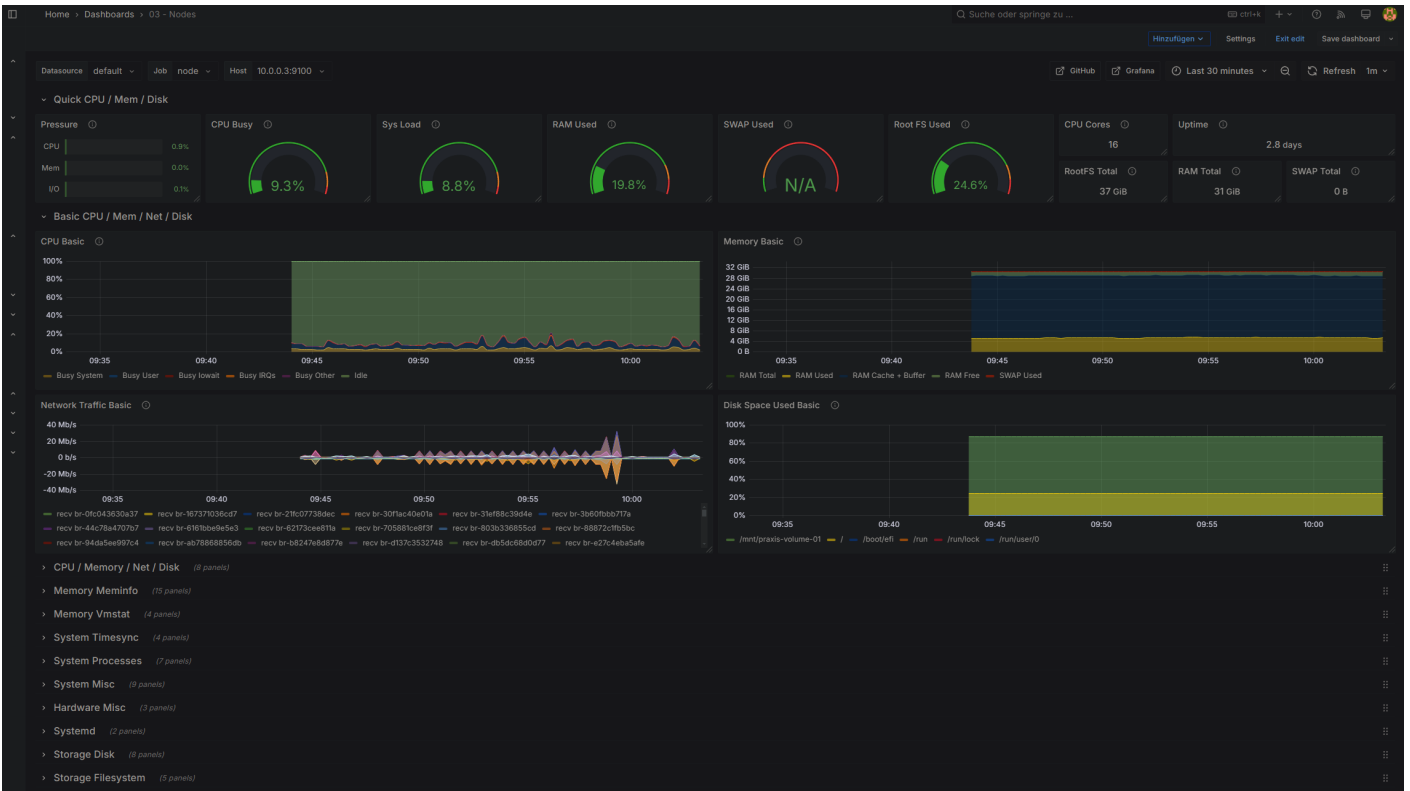
    static_configs:
      - targets: ["localhost:9090"]
- job_name: 'cadvisor'
  static_configs:
    #- targets: ['cadvisor:8080']
    # ^ LÄUFT LEIDER NICHT, HOSTNAME KANN NUR KURZ AM ANFANG VOM PROMETHEUS CONTANER MIT
    NSLOOKUP CADVISOR GEFUNDEN WERDEN, DANACH NICHT MEHR... ICH MACH ES EINFACH UEBER DIE EXTERNE
    IP ADRESSE.
    # docker exec -it prometheus /bin/sh
    # nslookup cadvisor
    # Bemerke dass der Host Port 8088 auf intern 8080 umleitet. Wenn du also cadvisor
    versuchst, nimm den internen Port 8080 und nicht 8088 so wie ich
    - targets: ['hetzner-01.MEINEDOMAIN.de:8088']
    # oder
    - targets: ['LOKALE-VPS-IP-ZB_10.0.0.3:8088']
- job_name: node
  static_configs:
    - targets: ['10.0.0.3:9100', '10.0.0.4:9100']

```

# Grafana Dashboards

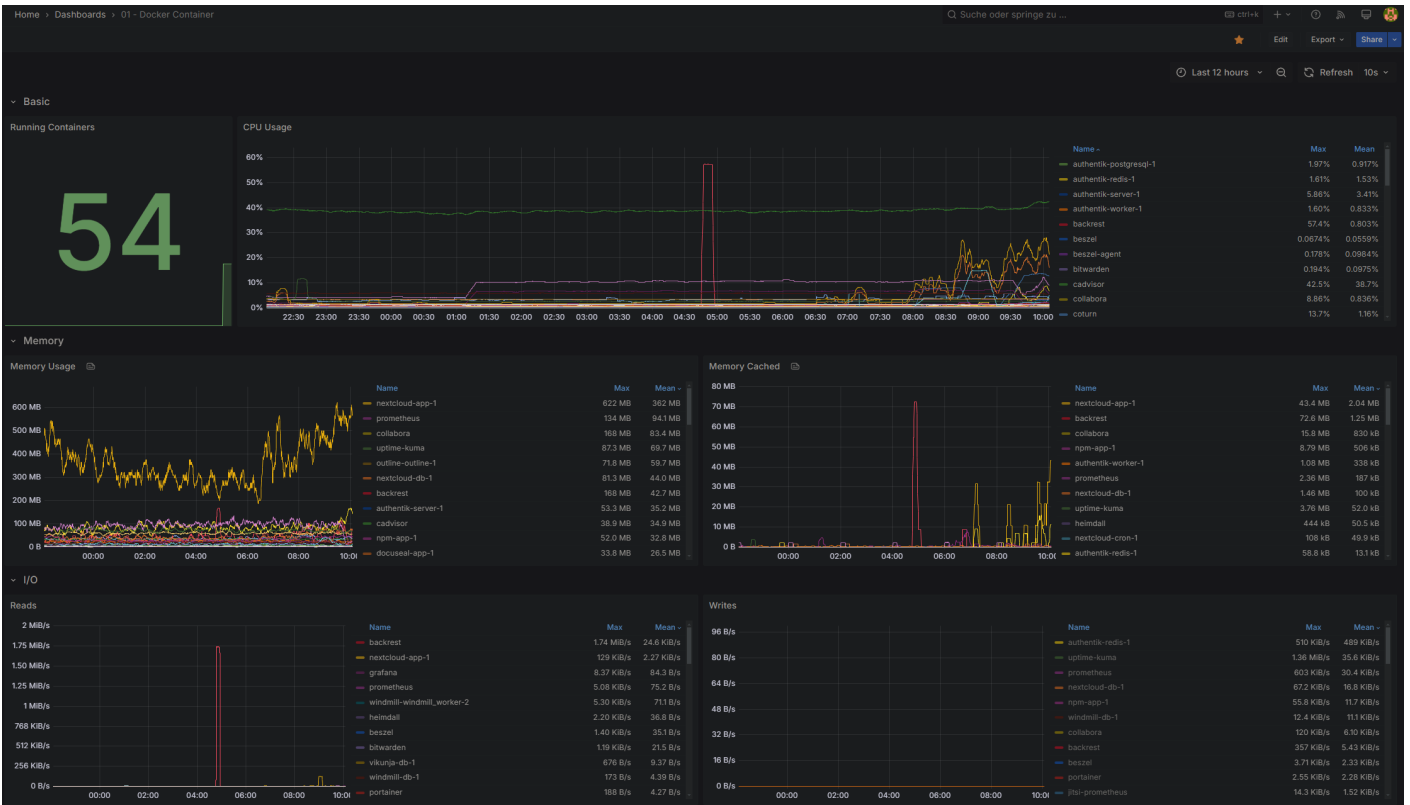
## Node Exporter Full

<https://grafana.com/grafana/dashboards/1860-node-exporter-full/>



# Docker Container (cadvisor)

<https://grafana.com/grafana/dashboards/19908-docker-container-monitoring-with-prometheus-and-cadvisor/>



# Jitsi Meet

<https://grafana.com/grafana/dashboards/12282-jitsi-meet-system/>



Revision #11

Created 2025-02-04 21:06:46 UTC

Updated 2025-02-26 09:28:05 UTC